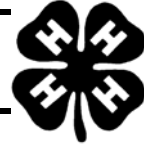


1982 Lytle Way*Abilene, Texas 79602*(325)672-6048*<http://taylor-tx.tamu.edu>



Summer 2011



4-H Calendar

DATES HAVE BEEN SET

June

- 21 District 7 4-H Horse Show in Sweetwater
- 21 4-H Sewing Workshop at Extension Office
- 23 Steer Validation - Abilene Auction from 4-6 p.m.
- 24 Recordbook ENTRIES DUE in office
- 24 County Fashion Show ENTRIES DUE in office
- 29 - July 1 District 7 4-H Leadership Lab

July

- 19 District 7 Junior 4-H Fashion Show - San Angelo
- 23 - 30 State 4-H Horse Show in Abilene

August

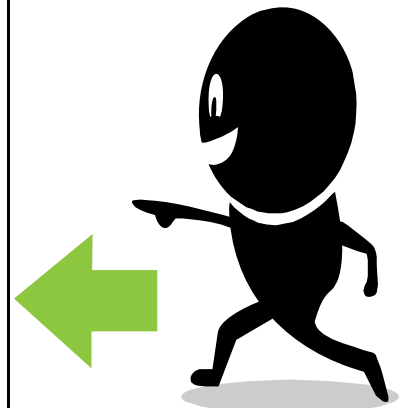
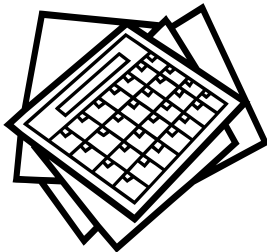
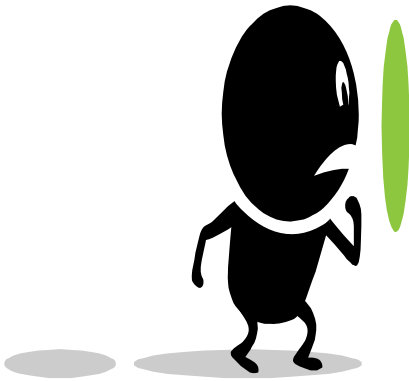
- 16 Taylor County 4-H Awards Banquet
- 20 District Project Development Meeting in San Angelo
- 23 4-H Council & Adult Leaders Meeting

For detailed information about ALL camps and programs visit the 4-H Center website at <http://texas4h-ctr.tamu.edu>

LOOK

Mission of 4-H

Prepare youth to meet the challenges of childhood, adolescence and adulthood, through a coordinated, long-term, progressive series of educational experiences that enhance life skills and develop social, emotional, physical and cognitive competencies.



4-H Participation Fee

If you have read any of the newsletters sent by the State 4-H office in the last couple of months you have seen information concerning the NEW 4-H participation fee. Since its inception, 4-H has never had a participation fee, but like everything else, things change. Due to the massive state budget deficit, Texas AgriLife Extension has instituted a Cost Recover plan to help support the organization. For 4-Hers, that means an annual "Participation Fee". The fee will be \$20 per member if you re-enroll for the 2011-2012 4-H year during the months of September and October. After October, the fee will be \$25 per member. This will allow us to continue to offer educational programming at no cost to enrolled 4-H members, while non-4-H members will be required to pay a \$10 fee per educational training.

Quality Counts

A special e-mail was sent to all Taylor County 4-H members last week concerning the new requirement by all major livestock shows to complete the Quality Counts character education course. Please refer to that e-mail for details on taking the course and completing the required exam.

If you plan to enter ANY of the livestock shows beyond the county livestock show you will be **REQUIRED** to have completed the course and pass a short test before you will be allowed to enter. Upon successful completion of the test (8 correct answers out of 10) you will be able to download and print your completion certificate which will have a number that will be needed to complete the entry process in November. It is to your advantage to complete the course this summer while you have some free time. There is no way to by-pass this requirement. I cannot delay the entry process so you can go home and do what you are being instructed to do at this time.

Those of you that usually enter livestock shows through your local FFA chapter, will need to follow the direction of your ag science teacher. He/she will probably handle this during class at the beginning of school. Whether you enter through 4-H or FFA, you will be required to pass the test.

The good news is (at this time anyway) you are only required to take the course and pass the test once as a junior member and once as a senior member. Let me know if you have questions.



4-H Roundup

Taylor County will be represented at State 4-H Round-Up next week by the following:

Nutrition Quiz Bowl Contest

Rosalie Shipman, Lauren Selensky,
Anna Young & Mary Rachel Young

Range & Pasture Grass Identification Contest

Ely Long, Anna Young & Mary Rachel Young

Share-the-Fun Vocal Contest - Stephanie Sides

Adults accompanying the group will be Jo Shipman and Pam Long.

GOOD LUCK TO ALL CONTESTANTS!

District 7 4-H Leadership Lab

Taylor County 4-Hers will be participating in the District 7 4-H Leadership Lab at the Texas 4-H Center on Lake Brownwood later this month. Those attending will be Anna Easley, Jay Helmer, Chris Martinez, Alyssa Rhodes, Rosalie Shipman, Andrew Willis, Katie Willis and Tambree Wolff. Alyssa Rhodes and Jay Helmer will be candidates for an office on the District 7 4-H Council. Good Luck guys! Tambree Wolff will be wrapping up her year as member of the District 4-H Council. **Good job , Tambree!**

RECORDBOOK TIME!!!

All recordbook entries are due in the county extension office no later than 5 p.m. on Friday, June 24th. I have conducted two recordbook trainings this year, so we should have a lot of 4-Hers that complete one this year. You have plenty of time to get your recordbook together. **Please do not call me at 5 p.m. on the due date wanting one more day to get your stuff together.**

Remember, you must complete a recordbook to have the opportunity to apply for the Green Star, Bronze Star, Silver Star or Gold Star Awards. Once I have all recordbooks in my office, I will send applications to those that are eligible to apply for star awards.



4-H VOLUNTEER CONFERENCE

From the desk of Courtney Dodd, Extension Program Specialist - 4-H:

The Texas 4-H & Youth Development Program is pleased to offer the first-ever statewide 4-H Volunteer Conference. The "**iVolunteer: From Impression to Impact**" Conference is scheduled to be held in San Antonio, July 29-31, 2011. Join us for a high energy, dynamic and engaging conference that will address the emerging issues of youth development and the Texas 4-H Program. The two and one-half-day conference will be filled with quality educational workshops and general sessions. Registration is now open on 4-H CONNECT. For more information, visit the [Texas 4-H Volunteer Conference](#) website.

One Day 4-H



It is not too early for your club to start planning a community service project to be conducted during

National 4-H Week in October for "One Day 4-H". More details will be forthcoming in September concerning "*One Day 4-H*".



Did you know you could have a 4-H dog project? The State 4-H Dog Show (which has been held annually for over 40 years) will be held in Temple this July. FYI! This is not just for pedigreed dogs. Most of the dogs in the project are just the family pet and many are dogs that have been rescued from the animal shelter. All we need for a project group in Taylor County is to have volunteers that are willing to organize activities for project meetings. If you are interested in a dog project give me a call.

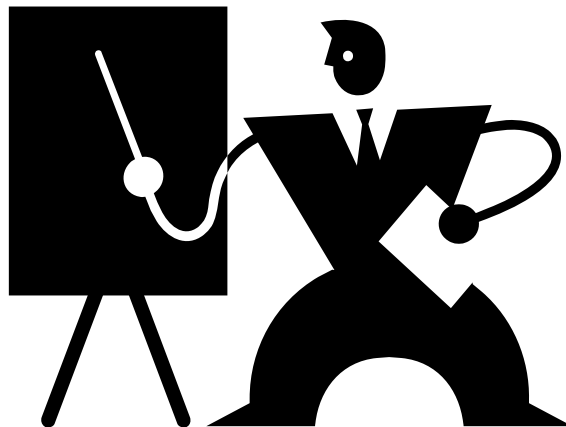
Mark Your Calendar...

The annual Taylor County 4-H Awards Banquet will be held on Tuesday, August 16 in the Big Country Hall next to the extension office. Put the date on your calendar now, details will come in early August.

Speaking of the awards banquet. I am once again requesting you to send any photos of you or your fellow 4-H members participating in any 4-H activity. Candid shots are the best. Send your photos to Amy at aacosta@ag.tamu.edu or to me at skhorne@ag.tamuedu. We will utilize them in the 4-H slide show that is shown during the awards banquet. Please know we may not be able to utilize every single photo sent, but it will help to have them to choose from. Thanks for your help.

District 7 Project Development Meeting

The District 7 Project Development meeting will be on Saturday, August 20th in San Angelo. This is an excellent opportunity for everyone (parents and 4-H members) to learn more about their favorite project or even a new project. I encourage all club officers and club managers to attend. Everyone is welcome to attend and will gain a great deal of knowledge. **ALL COUNTY 4-H COUNCIL OFFICERS ARE EXPECTED TO ATTEND.** More information will be send in early August.



HORSE HAPPENINGS!

County 4-H Horse Show



The annual Taylor County 4-H & Open Horse Show was held on May 21st. This serves as a practice show for our 4-H members for the upcoming summer shows. A great big thank you to the Horse Club leadership for the many hours of hard work put in to make this show a success for our members.

District 4-H Horse Show

The District 7 4-H Horse Show is scheduled for June 21 in Sweetwater. Representing Taylor County will be Rita Day, Savanna Day, Anna Easley, Calli Harvey, Hadleigh Harvey, Ashlea Maynard, Shannon Morrison, Morgan Redwine, Alyssa Rhodes, Jaden Rhodes, Bailey Ryan, Jaxon Shultz, Kristen White, Megan Williamson and Tambree Wolff.



to all 4-H members at District!

State 4-H Horse Show

The State 4-H Horse Show, held here in Abilene, will be here before you know it. This will be a great opportunity for all our 4-H families to watch our 4-H horsemen demonstrate their horsemanship skills in competition. Everyone is welcome to come and watch free of charge.

As the host county, we have to have volunteers to be at the entrance/exit gate everyday from 7 a.m. until 6 p.m.. You do not have to be a horse person to volunteer. All you need is a friendly smile and be a source of information when people come to the gate (I will supply the information). If you are interested in volunteering for this activity, go to the Taylor County website and click on the link "State Horse Show Volunteer". There you will be able to see what shifts are available and actually sign-up as you look at the schedule. The goal is to have at least three volunteers on the schedule at all times. If you can work even one shift it will be greatly appreciated. Call if you have questions and mark you calendar for July 23 -30!

4-H

Summer Fun!

Multi-County Sewing Workshop

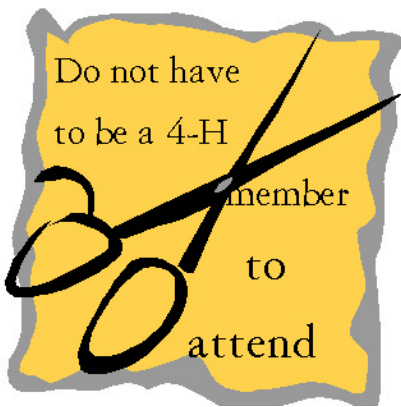


Tuesday
 June 21, 2011

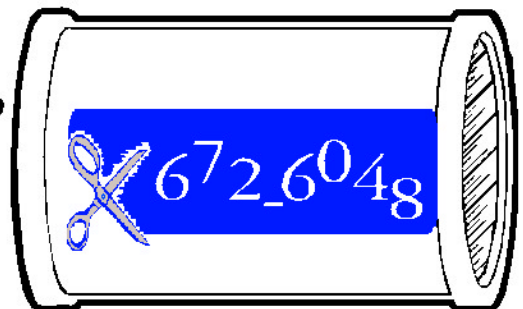
Taylor County
 Extension Office
 9 a.m. - 2 p.m.

You will get a supply
 list when you register!

Join us for a day
 of fun &
 learning! We
 will make a
 totebag, fleece
 blanket, felt bag
 & two
 community
 service projects.



RSVP by 5:00 p.m.
 June 16...



672_6048

4-H Pledge

"I Pledge my **Head** to clearer thinking,
my **Heart** to greater loyalty,
my **Hands** to larger service,
and my **Health** to better living,
for my club, my community, my country,
and my world."

4-H Prayer

**Help me, Oh Lord, to live
so that the world may be a little better
because thou didst make me.**

Amen

FROM THE OFFICE OF:

Kit Horne

Kit Horne
County Extension Agent -
4-H and Youth Development
Taylor County

Educational programs of Texas AgriLife Extension Service are open to all people without regard to race, color, sex, disability, religion, age or national origin. The Texas A&M University System, U.S. Department of Agriculture, and the County Commissioners Courts of Texas Cooperating.